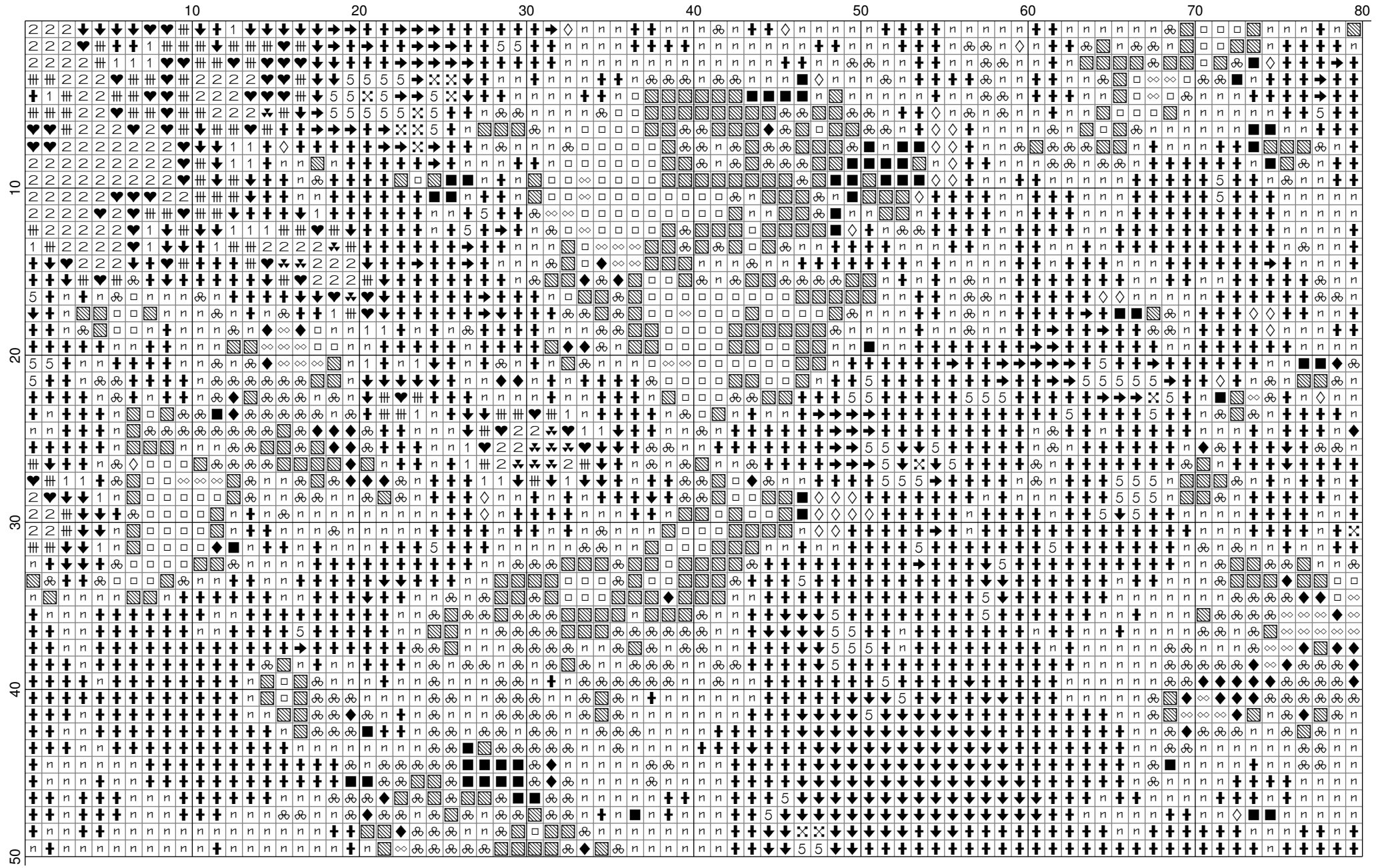




◇◇		Ecru (1005)	III		902 V DK Garnet (366)
◆◆		167 V DK Yellow Beige (628)	≡		928 V LT Gray Green (515)
≡		310 Black (1966)	●		934 Black Avocado Green (328)
⌘		334 MD Baby Blue (7)	✦		938 Ultra DK Coffee Brown (417)
⌘		370 MD Mustard (955)	⊙		939 V DK Navy Blue (109)
••		372 LT Mustard (532)	◇		945 Tawny (102)
■		414 DK Steel Gray (869)	■		948 V LT Peach (1366)
✱		422 LT Hazelnut Brown (451)	T		951 LT Tawny (514)
+		433 MD Brown (385)	▣		3022 MD Brown Gray (1550)
↑		436 Tan (114)	//		3023 LT Brown Gray (2434)
-		437 LT Tan (157)	♥		3024 V LT Brown Gray (1946)
▪		470 LT Avocado Green (1)	✕		3033 V LT Mocha Brown (4663)
/		472 Ultra LT Avocado Green (3)	✓		3045 DK Yellow Beige (659)
1		505 Jade Green (204)	↑		3046 MD Yellow Beige (293)
2		519 Sky Blue (212)	➔		3047 LT Yellow Beige (2112)
3		524 V LT Fern Green (2143)	↓		3072 V LT Beaver Gray (2506)
4		535 V LT Ash Gray (591)	←		3326 LT Rose (1)
5		543 Ultra V LT Beige Brown (3425)	^		3371 Black Brown (1178)
6		611 Drab Brown (445)	α		3750 V DK Antique Blue (1)
7		612 LT Drab Brown (708)	◆		3770 V LT Tawny (790)
8		613 V LT Drab Brown (580)	С		3778 LT Terra Cotta (2)
9		640 V DK Beige Gray (1601)	□		3787 DK Brown Gray (461)
:		642 DK Beige Gray (2079)	e		3790 Ultra DK Beige Gray (359)
· ·		644 MD Beige Gray (2181)	▼		3819 LT Moss Green (9)
<		645 V DK Beaver Gray (1209)	▲		3822 LT Straw (20)
=		646 DK Beaver Gray (1695)	□		3823 Ultra Pale Yellow (1540)
>		647 MD Beaver Gray (567)	🔗		3830 Terra Cotta (11)
↕		648 LT Beaver Gray (417)	🔗		3864 LT Mocha Beige (372)
⊗		712 Cream (1740)	m		3865 Winter White (435)
↓		738 V LT Tan (634)	n		3866 Ultra V LT Mocha Brown (4074)
◇		739 Ultra V LT Tan (1640)			
▨		746 Off White (1363)			
≡		760 Salmon (3)			
☒		801 DK Coffee Brown (852)			
⊕		803 Ultra V DK Baby Blue (12)			
н		815 MD Garnet (2)			
+		822 LT Beige Gray (9600)			
@		842 V LT Beige Brown (514)			
✕		869 V DK Hazelnut Brown (838)			
L		898 V DK Coffee Brown (539)			

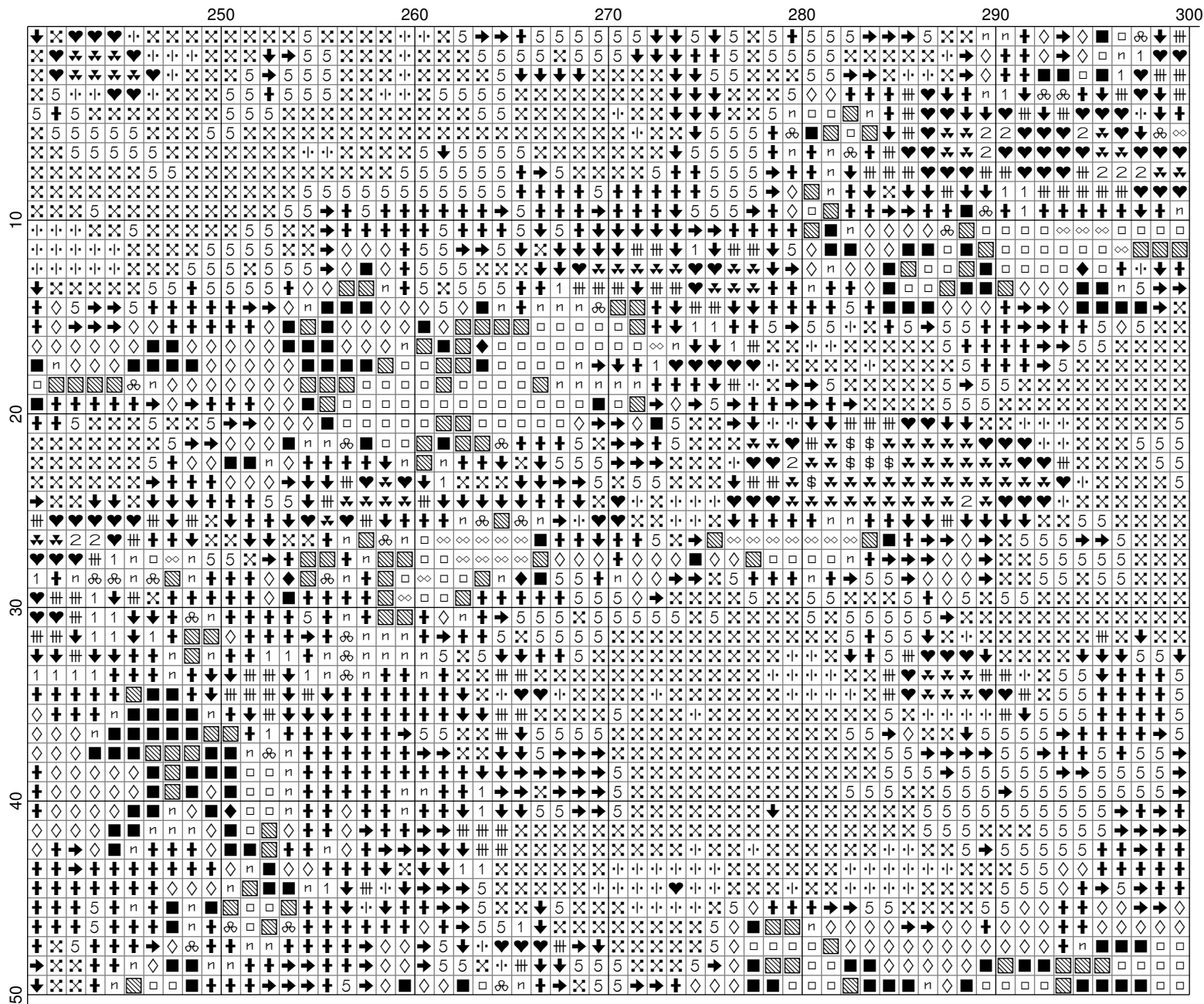
\* Карта цветов приведена для нитей марки «DMC»

\*\* В скобках после названия цвета указано количество крестов, выполняемых данным цветом





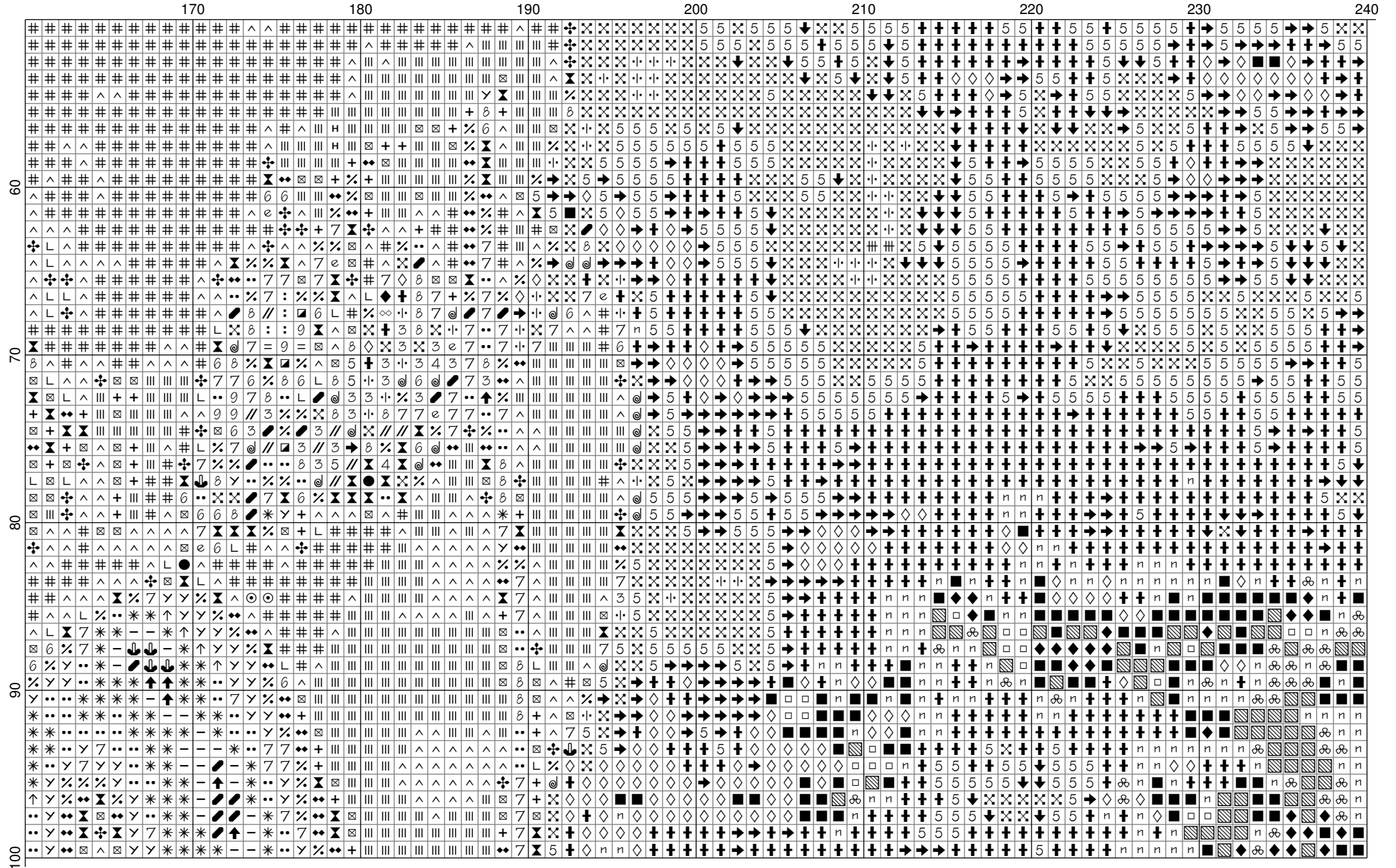


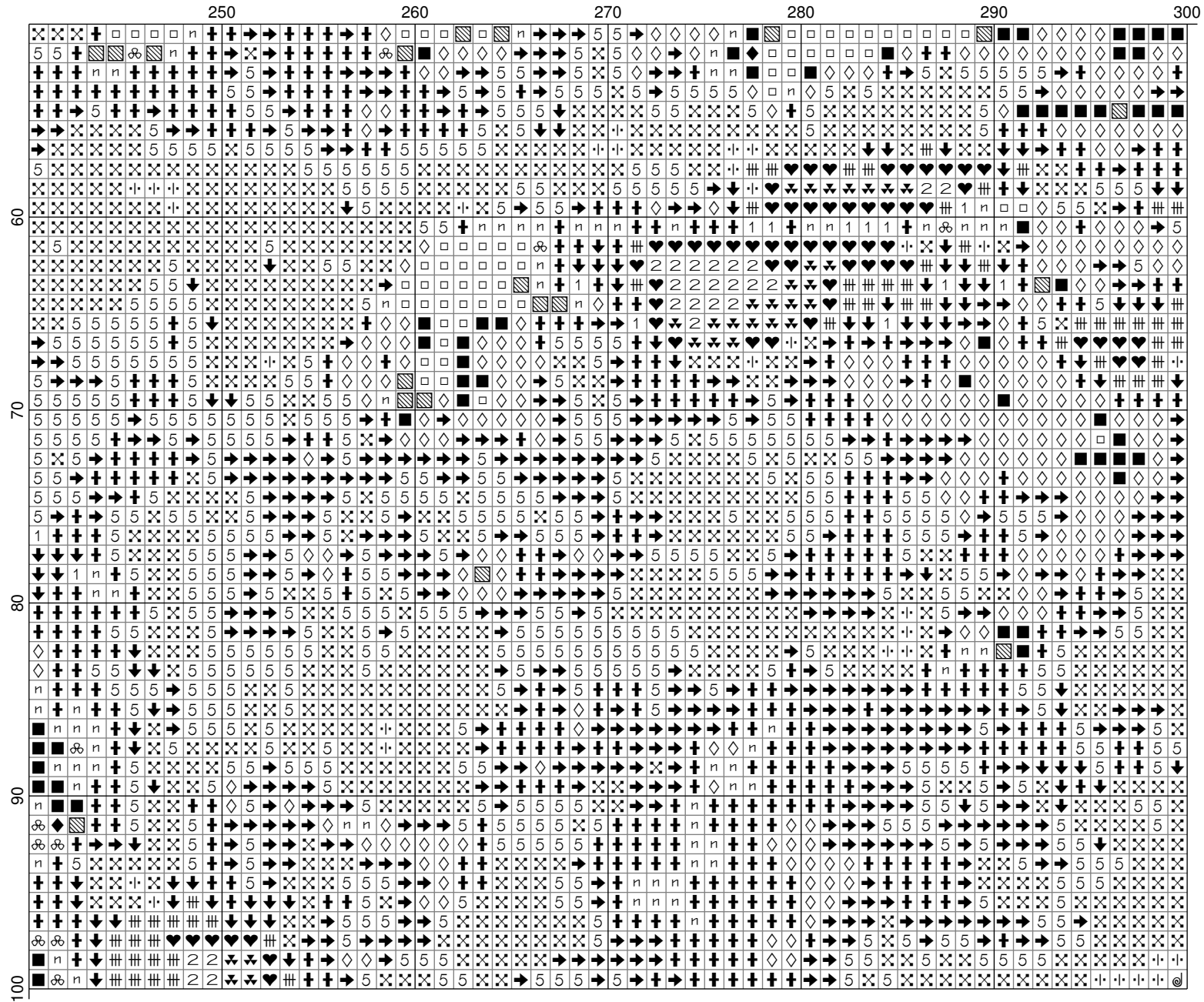


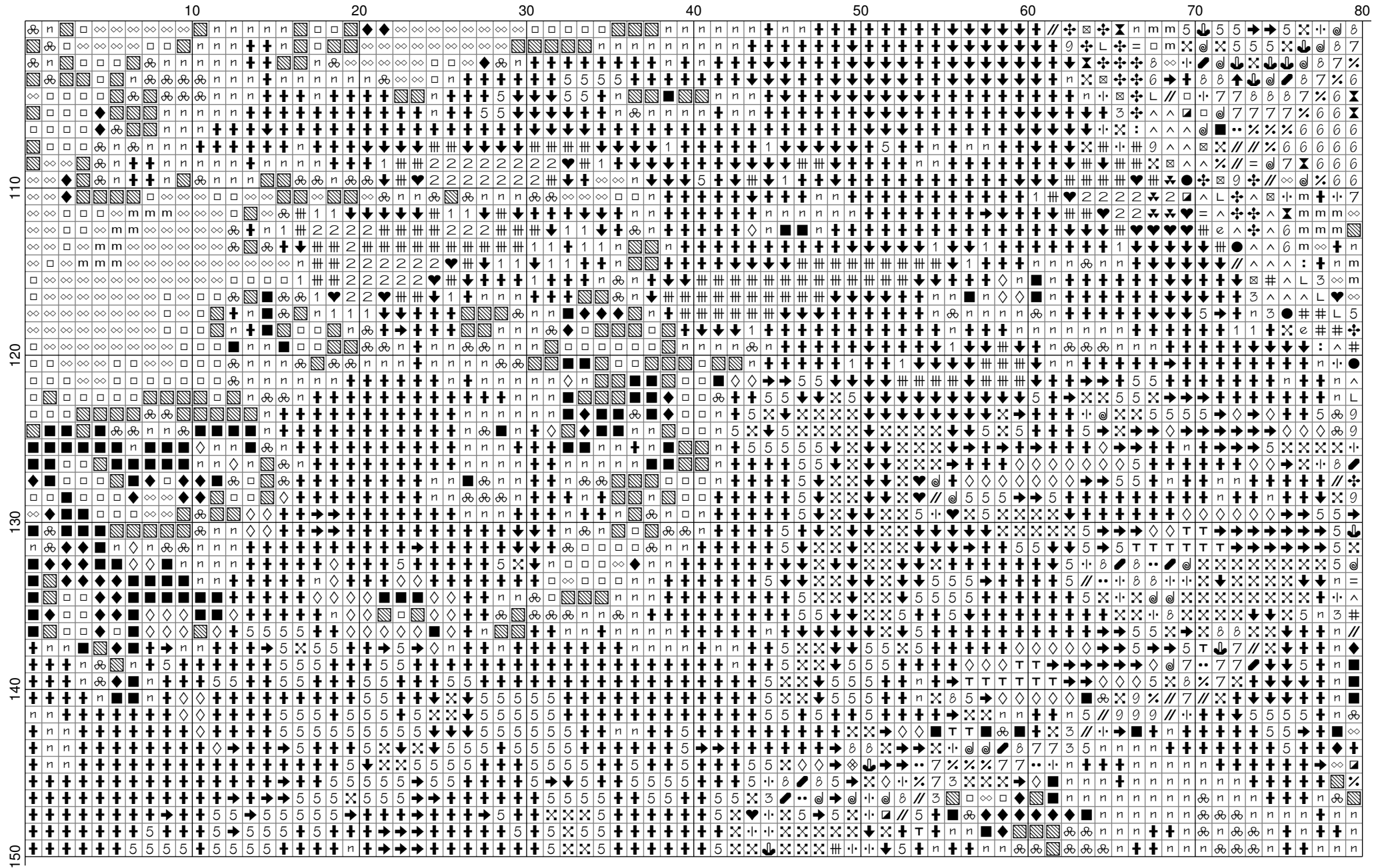


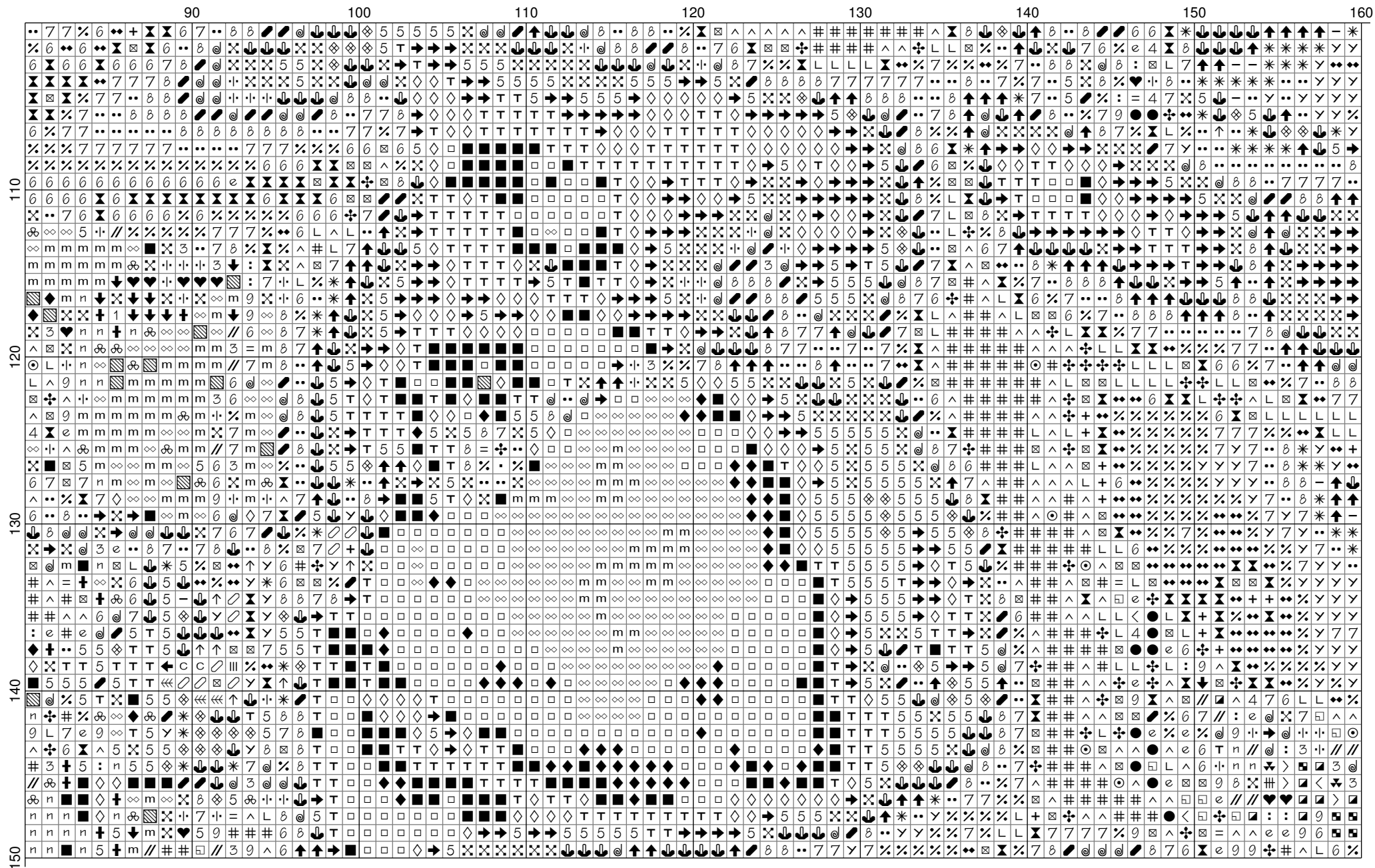


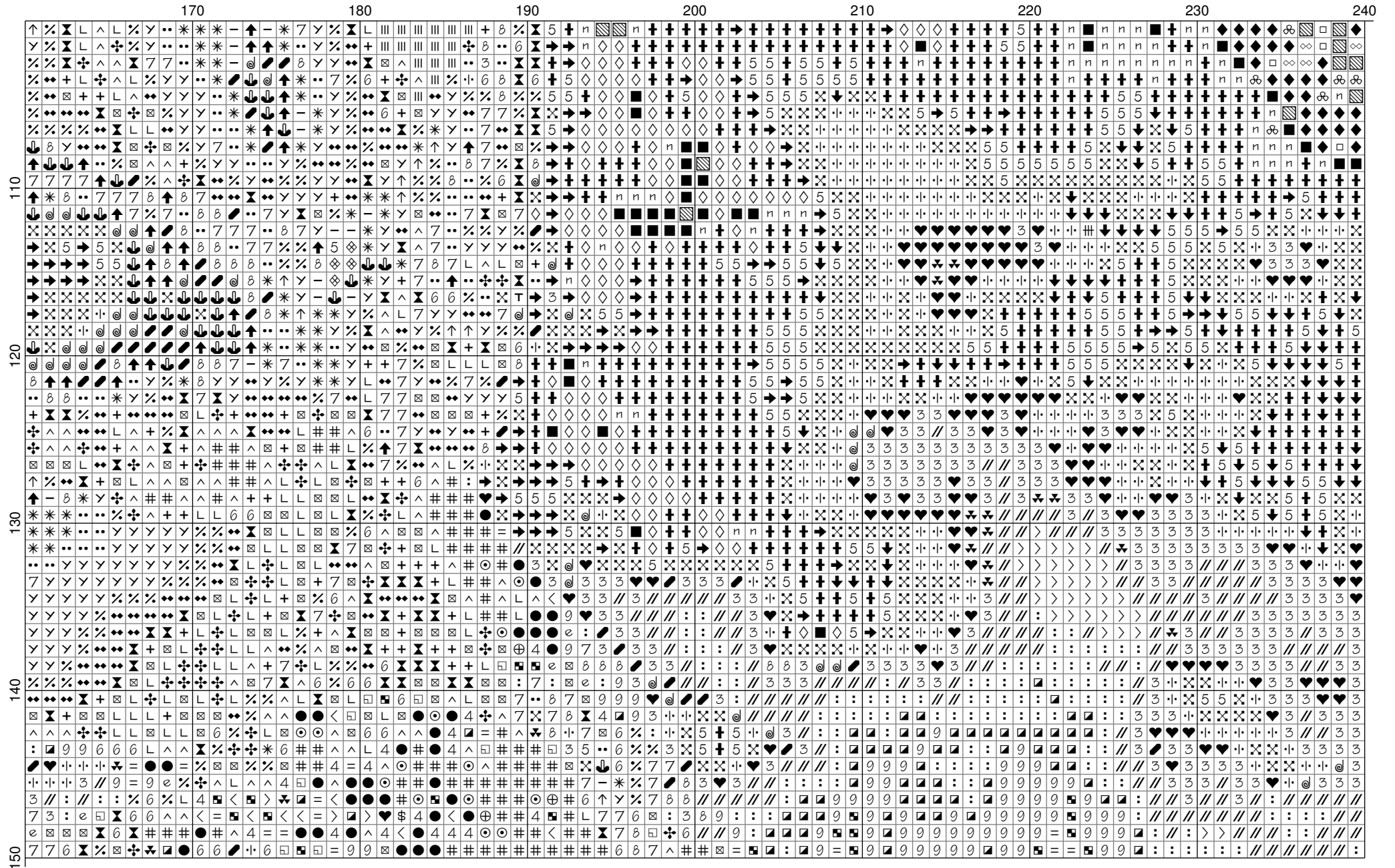


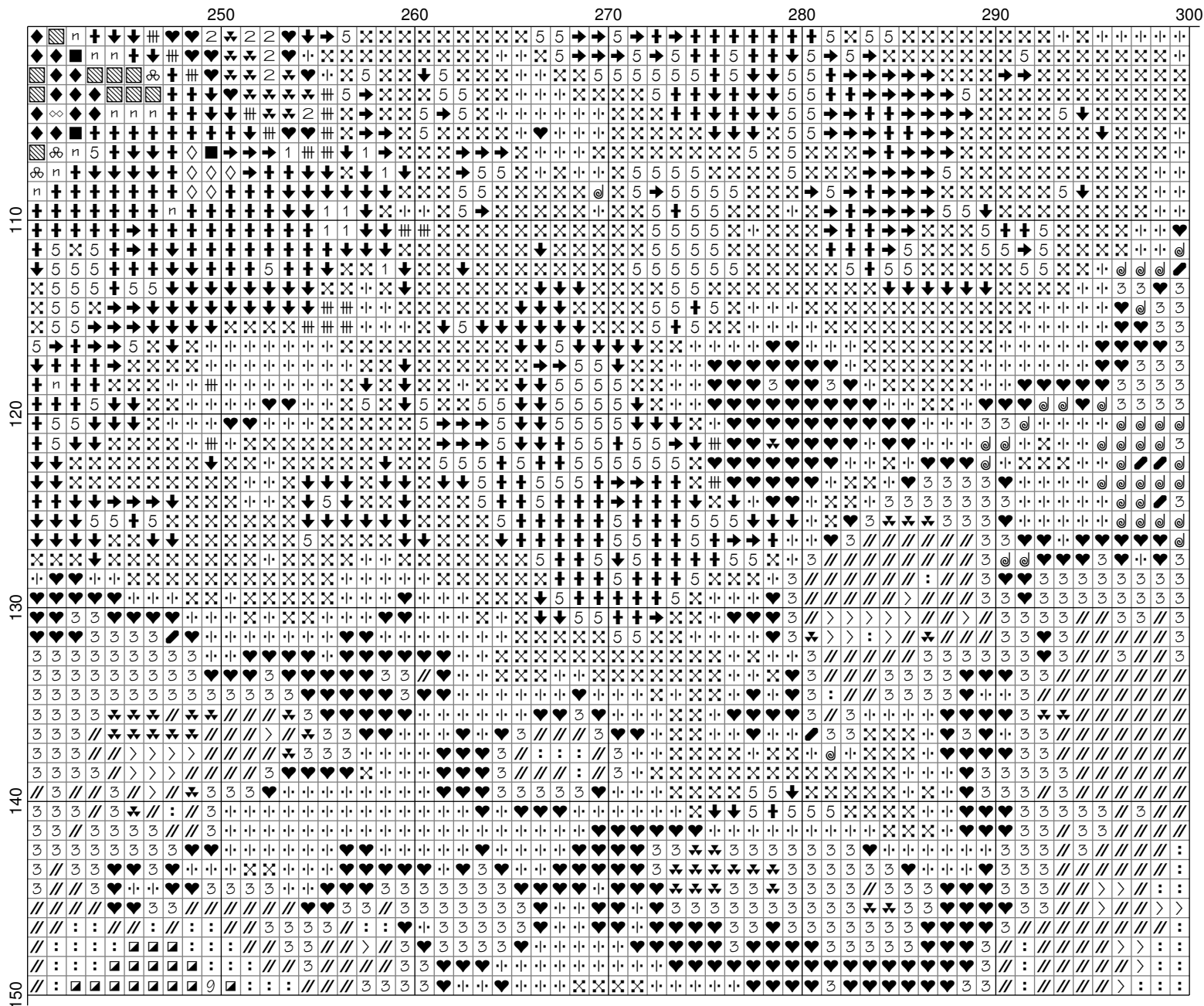


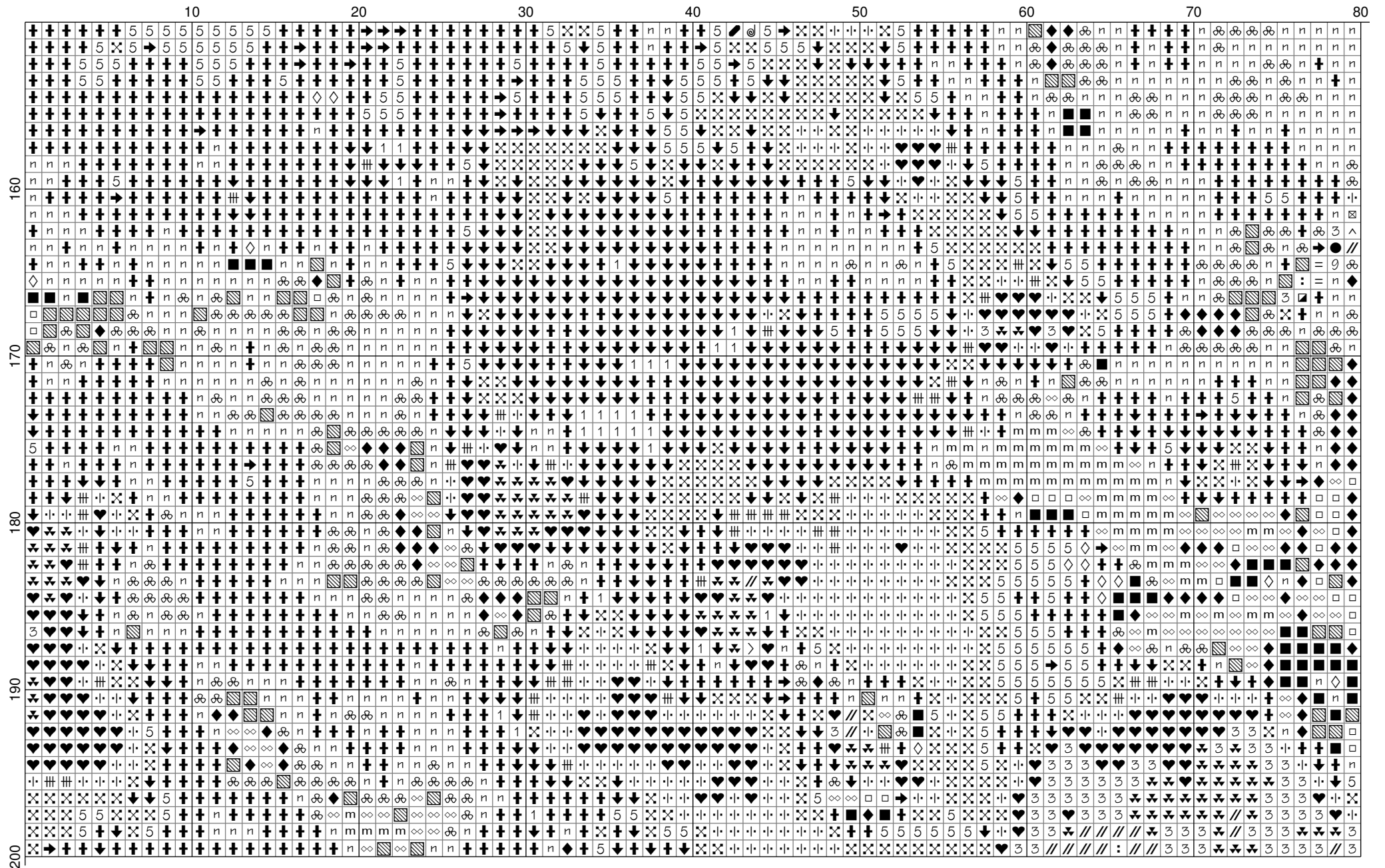


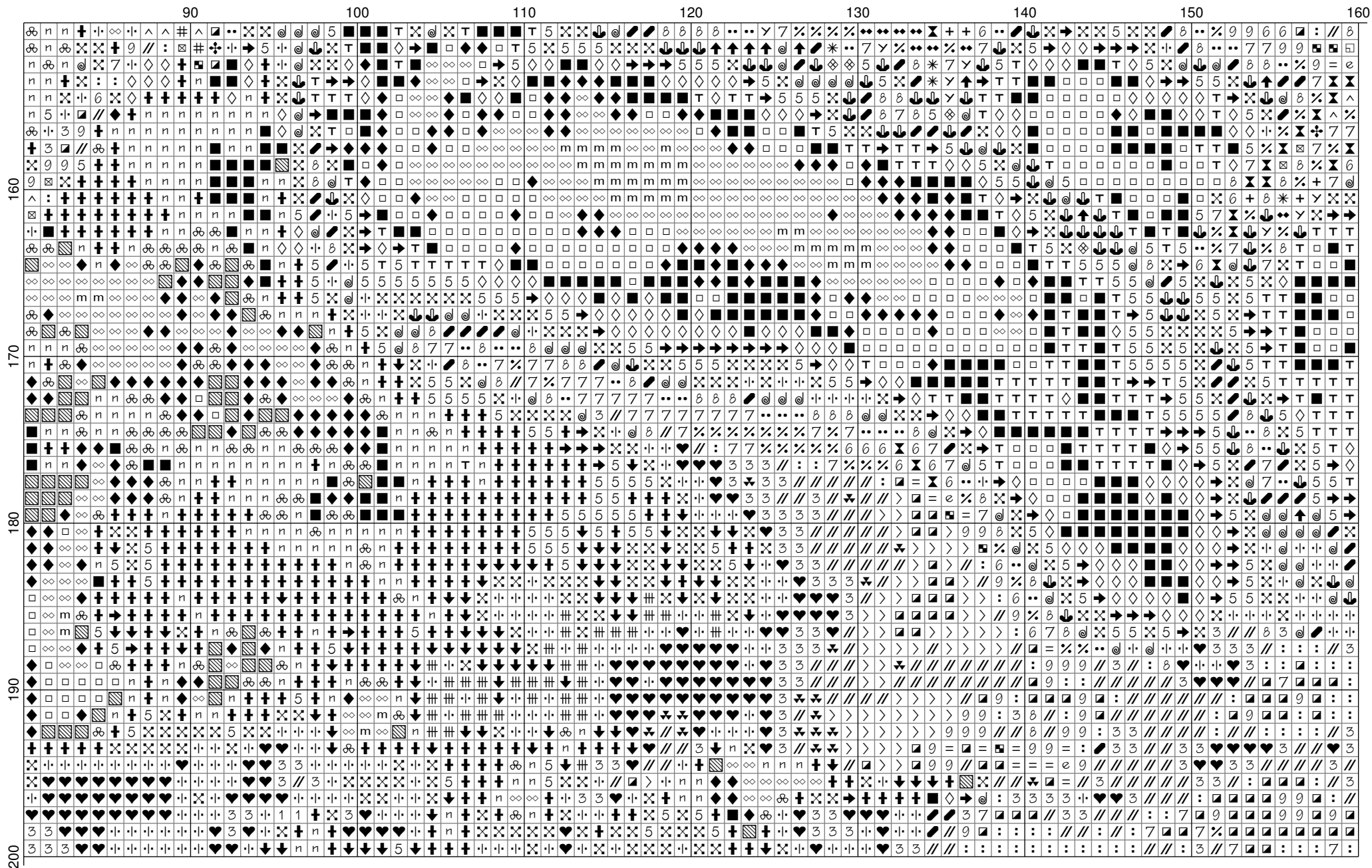




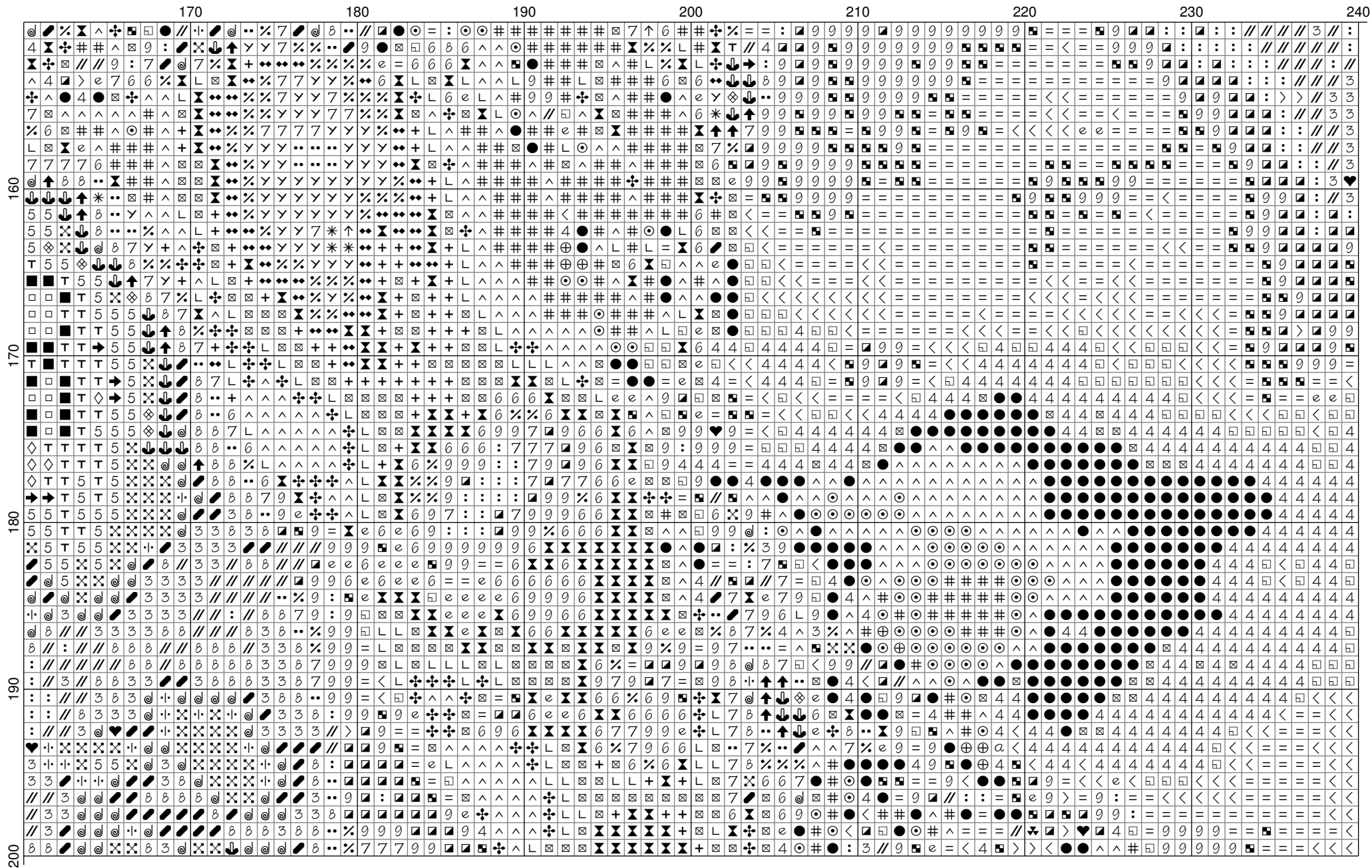












	250	260	270	280	290	300
160	:	:	:	:	:	:
170	<	<	<	<	<	<
180	4	4	4	4	4	4
190	<	<	<	<	<	<
200	e	e	e	e	e	e

